

SR-250R PREMIUM Roughiter



More Speedy, easier & safer!!

Hello to easier and safer jib-setting!
“E-jib” system proposes you new setting style.

- Maximum Lifting Capacity 25 ton X 3.5 m
- Boom Length 9.35 m – 30.5 m (4 section)
- Boom Derricking Angle 0° – 83°
- Jib Length 8.7 m – 13.1 m (2 section)
- Jib Off-set Angle 5° – 60°
- Maximum Lifting Height 31.2 m (Boom) / 44.8 m (Jib)



● Joint the Tension Rod

Manual Control

● Release the jib

Automatical Control

● Set the auxiliary hook

Manual Control



Including optional items.

[SPECIFICATION]



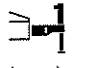
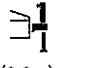

| ■ CRANE | | |
|--|---|---|
| Description Rough terrain crane with maximum lifting capacity 25 ton | | |
| ● Crane Specification | | |
| Maximum rated lifting capacity | 9.35m Boom | 25,000kg × 3.5m (Parts of line : 7) |
| | 16.4 m Boom | 19,000kg × 4.0m (Parts of line : 6) |
| | 23.45m Boom | 12,500kg × 5.5m (Parts of line : 4) |
| | 30.5 m Boom | 8,000kg × 7.5m (Parts of line : 4) |
| | 8.7 m Jib | 3,300kg × 75° (Parts of line : 1) |
| | 13.1 m Jib | 2,100kg × 73° (Parts of line : 1) |
| | Rooster | 4,000kg (Parts of line : 1) |
| Boom length | 9.35m — 30.5m | |
| Fly jib length | 8.7m — 13.1m | |
| Maximum rated lifting height | 31.2m (Boom) 44.8m (jib) | |
| Hoisting line speed (winch up) | Main winch | 125m / min. (at 4th layer) |
| | Auxiliary winch | 125m / min. (at 4th layer) |
| Hoisting hook speed (winch up) | Main winch | (Parts of line; 7) : 17.8m / min. (at 4th layer) |
| | Auxiliary winch | (Parts of line; 1) : 125.0m / min. (at 4th layer) |
| High-speed lowering | Main winch | Reference value with no load at 163m / min. (at 4th layer) |
| Rope speed | Auxiliary winch | |
| Boom derricking angle | 0° — 83° | |
| Boom derricking time | 40s / 0° — 83° | |
| Boom extending speed | 9.35 — 30.5m / 93s | |
| Stewing speed | 2.9min ⁻¹ | |
| Tail slewing radius | 3,100mm | |
| ● Equipment and structure | | |
| Boom type | Box-shaped, 4-section hydraulically telescopic type (Boom section 3 / 4 simultaneously operated) | |
| Jib type | 2 sections (2nd section of draw-out type) Hydraulic stepless tilting type (offset angles 5° — 60°) | |
| Boom extension/retraction equipment | Two hydraulic cylinders and wire ropes used together | |
| Boom derricking/lowering equipment | One hydraulic cylinder of direct acting type with pressure-compensated flow control valve | |
| Winch system Main & Auxiliary winches | Two units of Single winch Equipped with Hydraulic motor drive and Planetary gear speed reducer (built-in negative brake), High/Low speed switching system and Hydraulic compensated flow control valve. | |
| Slewing equipment | Equipped with Hydraulic motor drive and a planetary gear speed reducer (built-in negative brake) Free/Lock change-over model | |
| Slewing bearing | Ball bearing type | |
| Outriggers | Type | Hydraulic H-beam type (with float and vertical cylinder in single unit) |
| | Extension width | 6,600mm (Fully extended) |
| | | 6,000mm (Intermediately extended) |
| | | 5,000mm (Intermediately extended) |
| | | 3,800mm (Intermediately extended) |
| | | 2,310mm (Fully retracted) |
| Wire rope for hoisting | Main winch | Diameter: 16mm × Length: 175m |
| | Auxiliary winch | Diameter: 16mm × Length: 95m |
| ● Hydraulic equipment | | |
| Oil pump | Double variable plunger type, gear and plunger type | |
| Hydraulic motor | Hoisting motor | Axial plunger type |
| | Slewing motor | Axial plunger type |
| Control valve | Double acting with integral check and relief valves (With Hydraulic compensated flow control valve) | |
| Cylinder | Double acting type | |
| Oil reservoir capacity | 500L | |
| ● Safety devices | | |
| | ACS (Automatic Crane System with Voice alarm), Slewing automatic stop system, Boom raise / lower dampening function, Boom extension / retraction dampening function, Working range limit mode, Outrigger status detector, Boom derricking / telescoping holding valve, Jib derricking holding valve, Overhoist prevention device, Winch holding valve, Automatic winch brake, Winch drum roller, Hydraulic safety valves, Outrigger lock pins, Slewing lock, Slewing warning lamp, Hydraulic oil temperature warning device, Hydraulic oil return filter warning device | |
| ● Standard equipment | | |
| | Air conditioner (with cold/warm box), Hydraulic oil cooler, Working light (on boom, table and cab), Winch drum turning indication device, Hook for 25 ton, Hook for 4 ton | |
| ● Operator's cab | | |
| | Hydraulic cab suspension, Adjustable steering wheel, Adjustable suspension seat, Power Window (external closing switch), Front windscreen wiper & washer (2 speed wiper), Roof window wiper & washer, Tea table, Cigarette lighter, Access step light, Floor mat, AM/FM Radio, Hot and cool box | |
| ● Optional equipment | | |
| | ACS outside indicator, PA system, Door visor, Anemometer, Winch view camera | |

| ■ CARRIER | | |
|---|---|--|
| ● Carrier Specification | | |
| Maximum traveling speed | 49km/h | |
| Grade ability | 0.60 (tan θ) | |
| Minimum turning radius (center of extreme outer tire) | 8.2m (2 wheel steer) 4.9m (4 wheel steer) | |
| ● Engine | | |
| Model | Mitsubishi 6M60-TLE3A (with Intercooled turbocharger) | |
| Type | 4 cycle, 6 cylinders, water cooled, direct injection turbo-charged diesel engine with intercooling | |
| Piston displacement | 7.545L | |
| Max. power | 200kW at 2,600min ⁻¹ | |
| Max. torque | 785N·m at 1,400min ⁻¹ | |
| ● Equipment and structure | | |
| Drive system | Switches between 2 wheel drive (4x2) and 4 wheel drive (4x4) | |
| Torque converter | Engine mounted 3 elements 1 stage (with lock up clutch) | |
| Transmission | Remote mounted full automatic | |
| Number of speeds | 4 forward & 1 reverse speed (with Hi - Low selector) | |
| Axles | Front | Full floating type, with a two-stage reduction gear |
| | Rear | Full floating type, with a two-stage reduction gear |
| Suspension | Front | Taper - leaf spring (hydraulic locking device with shock absorber) |
| | Rear | Taper - leaf spring (hydraulic locking device with shock absorber) |
| Brake system | Service | Air-over hydraulic disk brake on 4 wheels (front and rear independent circuit) |
| | Parking | Spring applied, electrically air released parking brake mounted on front axle, internal expanding type |
| | Auxiliary | Exhaust brake (electronically controlled torque converter interlocking) Eddy current type retarder, Auxiliary braking unit for working |
| Steering | Model | All hydraulic power steering with reverse steering correction system |
| | Mode | Front 2 wheel steering, counter steering, crab steering, rear 2 wheel steering, independent front and rear wheel steering (5 modes) (with automatic rear steering lock system) |
| Tire size | Front | 385 / 95 R25 170E ROAD |
| | Rear | 385 / 95 R25 170E ROAD |
| Fuel tank capacity | 300 L | |
| Batteries | (12V-120AH) × 2 | |
| ● Safety devices | | |
| | Emergency steering device, Rear wheel steering lock system (automatic), Miss-shifting prevention system, Brake fluid leak warning device, Service brake lock, Suspension lock, Engine overspeed alarm, Radiator coolant level warning device, Electrically stowed side mirrors, Mirror on the right side of the boom, Rear/view camera and color monitor, Air filter service warning device | |
| ● Standard equipment | | |
| | Centralized lubricating system | |
| ● Optional equipment | | |
| | Right side view camera, Left side view camera, Wheel stopper, Way side lamp, Side marker lamp | |
| ■ GENERAL Dimensions | | |
| Overall length | 11,565mm | |
| Overall width | 2,620mm | |
| Overall height | 3,475mm | |
| Wheel base | 3,650mm | |
| Treads | Front | 2,170mm |
| | Rear | 2,170mm |
| Passenger capacity | One person | |
| Gross vehicle mass | Gross weight | approx. 26,495kg |
| | Front weight | approx. 13,180kg |
| | Rear weight | approx. 13,315kg |
| ● Stow the hooks in place before traveling. | | |
| ● Before you use this machine, read the precautions in the instruction manual thoroughly to operate it correctly. | | |
| ● KATO products and specifications are subject to improvements and changes without notice. | | |

RATED LIFTING CAPACITY

Based on ISO 4305
Not exceed 75% of static tipping loads

9.35m — 30.5m Boom

| Working radius (m) |  (6.6m) | | | |  (6.0m) | | | |  (5.0m) | | | |  (3.8m) | | | |  (2.31m) | | | | |
|---------------------|---|------------|-------------|------------|---|------------|-------------|------------|---|------------|-------------|------------|---|------------|-------------|------------|--|------------|-------------|------------|--|
| | Outriggers fully extended (360° full range) | | | | Outriggers intermediately extended (over side) | | | | Outriggers intermediately extended (over side) | | | | Outriggers intermediately extended (over side) | | | | Outriggers completely retracted (over side) | | | | |
| | 9.35m Boom | 16.4m Boom | 23.45m Boom | 30.5m Boom | 9.35m Boom | 16.4m Boom | 23.45m Boom | 30.5m Boom | 9.35m Boom | 16.4m Boom | 23.45m Boom | 30.5m Boom | 9.35m Boom | 16.4m Boom | 23.45m Boom | 30.5m Boom | 9.35m Boom | 16.4m Boom | 23.45m Boom | 30.5m Boom | |
| 2.5 | 25.00 | 19.00 | 12.50 | | 25.00 | 19.00 | 12.50 | | 25.00 | 19.00 | 12.50 | | 25.00 | 19.00 | 12.50 | | 12.00 | 11.60 | 9.20 | | |
| 3.0 | 25.00 | 19.00 | 12.50 | | 25.00 | 19.00 | 12.50 | | 25.00 | 19.00 | 12.50 | | 25.00 | 19.00 | 12.50 | | 12.00 | 11.60 | 9.20 | | |
| 3.5 | 25.00 | 19.00 | 12.50 | 8.00 | 25.00 | 19.00 | 12.50 | 8.00 | 25.00 | 19.00 | 12.50 | 8.00 | 22.20 | 19.00 | 12.50 | 8.00 | 9.20 | 9.10 | 8.80 | 5.50 | |
| 4.0 | 23.00 | 19.00 | 12.50 | 8.00 | 23.00 | 19.00 | 12.50 | 8.00 | 23.00 | 19.00 | 12.50 | 8.00 | 16.50 | 15.90 | 12.50 | 8.00 | 7.25 | 7.10 | 7.40 | 5.50 | |
| 4.5 | 21.20 | 18.15 | 12.50 | 8.00 | 21.20 | 18.15 | 12.50 | 8.00 | 21.20 | 18.15 | 12.50 | 8.00 | 12.95 | 12.80 | 12.50 | 8.00 | 5.85 | 5.75 | 6.25 | 5.20 | |
| 5.0 | 19.40 | 17.00 | 12.50 | 8.00 | 19.40 | 17.00 | 12.50 | 8.00 | 17.90 | 17.00 | 12.50 | 8.00 | 10.55 | 10.40 | 10.80 | 8.00 | 4.80 | 4.70 | 5.40 | 4.55 | |
| 5.5 | 17.80 | 16.00 | 12.50 | 8.00 | 17.80 | 16.00 | 12.50 | 8.00 | 14.60 | 14.35 | 12.50 | 8.00 | 8.80 | 8.60 | 9.40 | 8.00 | 4.05 | 3.90 | 4.55 | 4.00 | |
| 6.0 | 16.30 | 15.05 | 12.20 | 8.00 | 16.30 | 15.05 | 12.20 | 8.00 | 12.20 | 12.00 | 12.20 | 8.00 | 7.45 | 7.30 | 8.05 | 7.95 | 3.40 | 3.25 | 3.90 | 3.55 | |
| 6.5 | 15.10 | 14.25 | 11.50 | 8.00 | 15.10 | 14.25 | 11.50 | 8.00 | 10.40 | 10.20 | 11.05 | 8.00 | 6.45 | 6.25 | 6.95 | 7.10 | 2.90 | 2.75 | 3.35 | 3.15 | |
| 7.0 | | 13.45 | 10.80 | 8.00 | | 12.25 | 10.80 | 8.00 | | 8.80 | 9.60 | 8.00 | | 5.40 | 6.10 | 6.40 | | 2.30 | 2.90 | 2.80 | |
| 7.5 | | 12.70 | 10.20 | 8.00 | | 10.60 | 10.20 | 8.00 | | 7.70 | 8.45 | 8.00 | | 4.70 | 5.35 | 5.70 | | 1.95 | 2.50 | 2.45 | |
| 8.0 | | 11.10 | 9.60 | 7.60 | | 9.30 | 9.60 | 7.60 | | 6.75 | 7.50 | 7.60 | | 4.10 | 4.75 | 5.10 | | 1.60 | 2.20 | 2.20 | |
| 9.0 | | 8.75 | 8.60 | 6.90 | | 7.35 | 8.10 | 6.90 | | 5.35 | 6.05 | 6.35 | | 3.20 | 3.80 | 4.10 | | 1.00 | 1.65 | 1.70 | |
| 10.0 | | 7.10 | 7.70 | 6.25 | | 5.95 | 6.65 | 6.25 | | 4.30 | 4.95 | 5.25 | | 2.50 | 3.10 | 3.40 | | 0.50 | 1.20 | 1.35 | |
| 11.0 | | 5.80 | 6.50 | 5.70 | | 4.90 | 5.55 | 5.70 | | 3.50 | 4.15 | 4.45 | | 1.95 | 2.55 | 2.80 | | | 0.80 | 1.00 | |
| 12.0 | | 4.85 | 5.50 | 5.20 | | 4.10 | 4.75 | 5.00 | | 2.85 | 3.50 | 3.75 | | 1.45 | 2.10 | 2.35 | | | | | |
| 13.0 | | 4.10 | 4.70 | 4.80 | | 3.40 | 4.05 | 4.35 | | 2.30 | 2.95 | 3.25 | | 1.05 | 1.70 | 1.95 | | | | | |
| 13.5 | | 3.75 | 4.40 | 4.60 | | 3.10 | 3.75 | 4.05 | | 2.05 | 2.70 | 3.00 | | 0.85 | 1.50 | 1.80 | | | | | |
| 14.0 | | | 4.05 | 4.35 | | | 3.50 | 3.75 | | | 2.45 | 2.75 | | | 1.35 | 1.65 | | | | | |
| 15.0 | | | 3.55 | 3.80 | | | 3.00 | 3.30 | | | 2.10 | 2.35 | | | 1.05 | 1.35 | | | | | |
| 16.0 | | | 3.10 | 3.35 | | | 2.60 | 2.90 | | | 1.75 | 2.05 | | | 0.80 | 1.10 | | | | | |
| 17.0 | | | 2.70 | 2.95 | | | 2.25 | 2.55 | | | 1.45 | 1.75 | | | 0.55 | 0.85 | | | | | |
| 18.0 | | | 2.35 | 2.60 | | | 1.95 | 2.20 | | | 1.20 | 1.50 | | | | 0.65 | | | | | |
| 19.0 | | | 2.05 | 2.30 | | | 1.65 | 1.95 | | | 1.00 | 1.25 | | | | 0.45 | | | | | |
| 20.0 | | | 1.75 | 2.05 | | | 1.45 | 1.70 | | | 0.80 | 1.10 | | | | | | | | | |
| 20.5 | | | 1.65 | 1.90 | | | 1.35 | 1.60 | | | 0.70 | 1.00 | | | | | | | | | |
| 21.0 | | | | 1.80 | | | | 1.50 | | | | 0.90 | | | | | | | | | |
| 22.0 | | | | 1.60 | | | | 1.30 | | | | 0.70 | | | | | | | | | |
| 24.0 | | | | 1.25 | | | | 0.95 | | | | | | | | | | | | | |
| 26.0 | | | | 0.95 | | | | 0.70 | | | | | | | | | | | | | |
| 27.9 | | | | 0.75 | | | | 0.45 | | | | | | | | | | | | | |
| Critical boom angle | — | — | — | — | — | — | — | — | — | — | — | 35° | — | — | 34° | 46° | — | 41° | 56° | 65° | |
| Standard hook | for 25 ton | | | | for 25 ton | | | | for 25 ton | | | | for 25 ton | | | | for 25 ton | | | | |
| Hook mass | 220kg | | | | 220kg | | | | 220kg | | | | 220kg | | | | 220kg | | | | |
| Parts of line | 7 | 6 | 4 | 4 | 7 | 6 | 4 | 4 | 7 | 6 | 4 | 4 | 7 | 6 | 4 | 4 | 7 | 6 | 4 | 4 | |

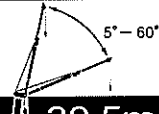
(Unit : Metric ton)



Based on ISO 4305
Not exceed 75% of static tipping loads

30.5m Boom+8.7m Jib

| (6.6m) | | | | | | | | (6.0m) | | | | | | | | (5.0m) | | | | | | | | | | |
|---|--------------------|------------|--------------------|------------|--------------------|------------|--------------------|--|---------------------|--------------------|------------|--------------------|------------|--------------------|------------|--|------------|---------------------|--------------------|------------|--------------------|------------|--------------------|------------|--------------------|------------|
| Outriggers fully extended (360° full range) | | | | | | | | Outriggers intermediately extended (over side) | | | | | | | | Outriggers intermediately extended (over side) | | | | | | | | | | |
| Boom angle (°) | Offset 5° | | Offset 25° | | Offset 45° | | Offset 60° | | Boom angle (°) | Offset 5° | | Offset 25° | | Offset 45° | | Offset 60° | | Boom angle (°) | Offset 5° | | Offset 25° | | Offset 45° | | Offset 60° | |
| | Working radius (m) | Load (ton) | Working radius (m) | Load (ton) | Working radius (m) | Load (ton) | Working radius (m) | Load (ton) | | Working radius (m) | Load (ton) | Working radius (m) | Load (ton) | Working radius (m) | Load (ton) | Working radius (m) | Load (ton) | | Working radius (m) | Load (ton) | Working radius (m) | Load (ton) | Working radius (m) | Load (ton) | Working radius (m) | Load (ton) |
| 83 | 4.9 | 3.30 | 7.4 | 2.30 | 9.2 | 1.60 | 9.8 | 1.05 | 83 | 4.9 | 3.30 | 7.4 | 2.30 | 9.2 | 1.60 | 9.8 | 1.05 | 83 | 4.9 | 3.30 | 7.4 | 2.30 | 9.2 | 1.60 | 9.8 | 1.05 |
| 75 | 10.9 | 3.30 | 13.0 | 2.30 | 14.2 | 1.53 | 14.4 | 1.05 | 75 | 10.9 | 3.30 | 13.0 | 2.30 | 14.2 | 1.53 | 14.4 | 1.05 | 75 | 10.9 | 3.30 | 13.0 | 2.30 | 14.2 | 1.53 | 14.4 | 1.05 |
| 73 | 12.3 | 3.25 | 14.3 | 2.28 | 15.4 | 1.49 | 15.5 | 1.05 | 73 | 12.3 | 3.25 | 14.3 | 2.28 | 15.4 | 1.49 | 15.5 | 1.05 | 73 | 12.3 | 3.25 | 14.3 | 2.28 | 15.4 | 1.49 | 15.5 | 1.05 |
| 71 | 13.6 | 2.93 | 15.5 | 2.14 | 16.5 | 1.45 | 16.6 | 1.04 | 71 | 13.6 | 2.93 | 15.5 | 2.14 | 16.5 | 1.45 | 16.6 | 1.04 | 71 | 13.6 | 2.93 | 15.5 | 2.14 | 16.5 | 1.45 | 16.6 | 1.04 |
| 69 | 14.9 | 2.65 | 16.7 | 1.99 | 17.6 | 1.43 | 17.7 | 1.04 | 69 | 14.9 | 2.65 | 16.7 | 1.99 | 17.6 | 1.43 | 17.7 | 1.04 | 69 | 14.9 | 2.46 | 16.7 | 1.99 | 17.6 | 1.43 | 17.7 | 1.04 |
| 65 | 17.4 | 2.23 | 19.0 | 1.76 | 19.7 | 1.37 | 19.7 | 1.04 | 65 | 17.4 | 2.23 | 19.0 | 1.76 | 19.7 | 1.37 | 19.7 | 1.04 | 68 | 15.4 | 2.27 | 17.3 | 1.93 | 18.1 | 1.41 | 18.2 | 1.04 |
| 62 | 19.1 | 1.99 | 20.6 | 1.62 | 21.3 | 1.34 | 21.0 | 1.04 | 62 | 19.1 | 1.92 | 20.6 | 1.62 | 21.3 | 1.34 | 21.0 | 1.04 | 64 | 17.6 | 1.60 | 19.4 | 1.40 | 20.3 | 1.33 | 20.2 | 1.04 |
| 58 | 21.3 | 1.72 | 22.7 | 1.46 | 23.2 | 1.31 | | | 60 | 20.2 | 1.65 | 21.7 | 1.51 | 22.2 | 1.33 | | | 62 | 18.7 | 1.33 | 20.4 | 1.19 | 21.2 | 1.14 | 21.0 | 1.04 |
| 56 | 22.4 | 1.48 | 23.8 | 1.37 | 24.2 | 1.27 | | | 58 | 21.2 | 1.43 | 22.7 | 1.31 | 23.2 | 1.30 | | | 61 | 19.8 | 1.10 | 21.4 | 0.99 | 22.1 | 0.97 | | |
| 55 | 22.9 | 1.39 | 24.2 | 1.30 | 24.6 | 1.27 | | | 55 | 22.7 | 1.14 | 24.1 | 1.06 | 24.5 | 1.05 | | | 55 | 22.4 | 0.62 | 23.9 | 0.55 | 24.3 | 0.55 | | |
| 50 | 25.3 | 0.98 | 26.5 | 0.91 | 26.5 | 0.91 | | | 50 | 25.1 | 0.75 | 26.3 | 0.70 | 26.5 | 0.70 | | | 53 | 23.3 | 0.48 | 24.9 | 0.40 | 25.1 | 0.40 | | |
| 46 | 27.0 | 0.71 | 28.0 | 0.68 | 28.0 | 0.68 | | | 46 | 26.9 | 0.49 | 27.9 | 0.46 | 27.9 | 0.46 | | | Critical boom angle | 52° | | 52° | | 52° | | 61° | |
| 45 | 27.4 | 0.65 | 28.4 | 0.62 | | | | | 45 | 27.4 | 0.42 | 28.3 | 0.41 | | | | | Standard hook | for 4 ton | | | | | | | |
| 40 | 29.5 | 0.38 | 30.4 | 0.35 | | | | | Critical boom angle | 44° | | 44° | | 45° | | 61° | | Standard hook | for 4 ton | | | | | | | |
| Critical boom angle | 39° | | 39° | | 45° | | 61° | | Standard hook | for 4 ton | | | | | | Hook mass | 60kg | | | | | | | | | |
| Standard hook | for 4 ton | | | | | | | | Hook mass | 60kg | | | | | | | | Parts of line | 1 | | | | | | | |
| Hook mass | 60kg | | | | | | | | Parts of line | 1 | | | | | | | | Parts of line | 1 | | | | | | | |
| Parts of line | 1 | | | | | | | | Parts of line | 1 | | | | | | | | Parts of line | 1 | | | | | | | |



30.5m Boom+8.7m Jib

30.5m Boom+13.1m Jib

| (3.8m) | | | | | | | | |
|--|--------------------|------------|--------------------|------------|--------------------|------------|--------------------|------------|
| Outriggers intermediately extended (over side) | | | | | | | | |
| Boom angle (°) | Offset 5° | | Offset 25° | | Offset 45° | | Offset 60° | |
| | Working radius (m) | Load (ton) | Working radius (m) | Load (ton) | Working radius (m) | Load (ton) | Working radius (m) | Load (ton) |
| 83 | 4.9 | 3.30 | 7.4 | 2.30 | 9.2 | 1.60 | 9.8 | 1.05 |
| 76 | 10.2 | 3.30 | 12.3 | 2.30 | 13.6 | 1.55 | 13.9 | 1.05 |
| 75 | 10.9 | 2.96 | 13.0 | 2.30 | 14.2 | 1.53 | 14.4 | 1.05 |
| 71 | 13.2 | 1.96 | 15.2 | 1.63 | 16.5 | 1.45 | 16.6 | 1.04 |
| 68 | 14.9 | 1.40 | 16.9 | 1.17 | 18.0 | 1.09 | 18.2 | 1.04 |
| 65 | 16.6 | 0.97 | 18.5 | 0.82 | 19.4 | 0.79 | 19.6 | 0.78 |
| 62 | 18.3 | 0.59 | 20.2 | 0.48 | 20.9 | 0.48 | 20.9 | 0.48 |
| Critical boom angle | 61° | | 61° | | 61° | | 61° | |
| Standard hook | for 4 ton | | | | | | | |
| Hook mass | 60kg | | | | | | | |
| Parts of line | 1 | | | | | | | |

511-74302002

| (6.6m) | | | | | | | | |
|---|--------------------|------------|--------------------|------------|--------------------|------------|--------------------|------------|
| Outriggers fully extended (360° full range) | | | | | | | | |
| Boom angle (°) | Offset 5° | | Offset 25° | | Offset 45° | | Offset 60° | |
| | Working radius (m) | Load (ton) | Working radius (m) | Load (ton) | Working radius (m) | Load (ton) | Working radius (m) | Load (ton) |
| 83 | 5.8 | 2.10 | 9.8 | 1.25 | 12.8 | 0.85 | 14.0 | 0.65 |
| 77 | 11.0 | 2.10 | 14.4 | 1.25 | 16.8 | 0.85 | 17.6 | 0.65 |
| 73 | 14.2 | 2.10 | 17.3 | 1.20 | 19.3 | 0.85 | 20.0 | 0.65 |
| 71 | 15.7 | 2.03 | 18.7 | 1.15 | 20.5 | 0.85 | 21.0 | 0.64 |
| 65 | 19.9 | 1.62 | 22.5 | 1.03 | 24.0 | 0.83 | 24.1 | 0.63 |
| 62 | 21.8 | 1.48 | 24.3 | 0.99 | 25.5 | 0.81 | 25.7 | 0.63 |
| 60 | 23.1 | 1.38 | 25.5 | 0.96 | 26.6 | 0.80 | | |
| 55 | 26.1 | 1.15 | 28.3 | 0.91 | 29.0 | 0.79 | | |
| 53 | 27.2 | 1.00 | 29.3 | 0.89 | 29.9 | 0.79 | | |
| 51 | 28.2 | 0.87 | 30.2 | 0.80 | 30.6 | 0.79 | | |
| 46 | 30.8 | 0.58 | 32.3 | 0.54 | 32.4 | 0.54 | | |
| 45 | 31.1 | 0.52 | 32.7 | 0.49 | | | | |
| 43 | 32.0 | 0.43 | 33.5 | 0.41 | | | | |
| Critical boom angle | 42° | | 42° | | 45° | | 61° | |
| Standard hook | for 4 ton | | | | | | | |
| Hook mass | 60kg | | | | | | | |
| Parts of line | 1 | | | | | | | |

| (6.0m) | | | | | | | | |
|--|--------------------|------------|--------------------|------------|--------------------|------------|--------------------|------------|
| Outriggers intermediately extended (over side) | | | | | | | | |
| Boom angle (°) | Offset 5° | | Offset 25° | | Offset 45° | | Offset 60° | |
| | Working radius (m) | Load (ton) | Working radius (m) | Load (ton) | Working radius (m) | Load (ton) | Working radius (m) | Load (ton) |
| 83 | 5.8 | 2.10 | 9.8 | 1.25 | 12.8 | 0.85 | 14.0 | 0.65 |
| 77 | 11.0 | 2.10 | 14.4 | 1.25 | 16.8 | 0.85 | 17.6 | 0.65 |
| 73 | 14.2 | 2.10 | 17.3 | 1.20 | 19.3 | 0.85 | 20.0 | 0.65 |
| 71 | 15.7 | 2.03 | 18.7 | 1.15 | 20.5 | 0.85 | 21.0 | 0.64 |
| 65 | 19.9 | 1.62 | 22.5 | 1.03 | 24.0 | 0.83 | 24.1 | 0.63 |
| 62 | 21.8 | 1.48 | 24.3 | 0.99 | 25.5 | 0.81 | 25.7 | 0.63 |
| 60 | 23.1 | 1.37 | 25.5 | 0.96 | 26.6 | 0.80 | | |
| 59 | 23.7 | 1.27 | 26.1 | 0.94 | 27.1 | 0.80 | | |
| 57 | 24.9 | 1.09 | 27.2 | 0.92 | 28.0 | 0.80 | | |
| 55 | 26.1 | 0.92 | 28.3 | 0.84 | 29.0 | 0.79 | | |
| 50 | 28.7 | 0.59 | 30.6 | 0.54 | 31.0 | 0.53 | | |
| 48 | 29.7 | 0.48 | 31.5 | 0.44 | 31.7 | 0.44 | | |
| Critical boom angle | 47° | | 47° | | 47° | | 61° | |
| Standard hook | for 4 ton | | | | | | | |
| Hook mass | 60kg | | | | | | | |
| Parts of line | 1 | | | | | | | |

30.5m Boom+13.1m Jib



| (5.0m) | | | | | | | | |
|--|--------------------|------------|--------------------|------------|--------------------|------------|--------------------|------------|
| Outriggers intermediately extended (over side) | | | | | | | | |
| Boom angle (°) | Offset 5° | | Offset 25° | | Offset 45° | | Offset 60° | |
| | Working radius (m) | Load (ton) | Working radius (m) | Load (ton) | Working radius (m) | Load (ton) | Working radius (m) | Load (ton) |
| 83 | 5.8 | 2.10 | 9.8 | 1.25 | 12.8 | 0.85 | 14.0 | 0.65 |
| 77 | 11.0 | 2.10 | 14.4 | 1.25 | 16.8 | 0.85 | 17.6 | 0.65 |
| 73 | 14.2 | 2.10 | 17.3 | 1.20 | 19.3 | 0.85 | 20.0 | 0.65 |
| 71 | 15.7 | 2.03 | 18.7 | 1.15 | 20.5 | 0.85 | 21.0 | 0.64 |
| 67 | 18.5 | 1.72 | 21.3 | 1.07 | 22.9 | 0.84 | 23.1 | 0.63 |
| 63 | 21.0 | 1.21 | 23.7 | 1.00 | 25.1 | 0.81 | 25.1 | 0.63 |
| 62 | 21.5 | 1.12 | 24.3 | 0.96 | 25.5 | 0.81 | 25.7 | 0.63 |
| 60 | 22.7 | 0.93 | 25.4 | 0.80 | 26.6 | 0.73 | | |
| 55 | 25.5 | 0.54 | 27.9 | 0.47 | 29.0 | 0.39 | | |
| Critical boom angle | 54° | | 54° | | 54° | | 61° | |
| Standard hook | for 4 ton | | | | | | | |
| Hook mass | 60kg | | | | | | | |
| Parts of line | 1 | | | | | | | |

511-74302002

| (3.8m) | | | | | | | | |
|--|--------------------|------------|--------------------|------------|--------------------|------------|--------------------|------------|
| Outriggers intermediately extended (over side) | | | | | | | | |
| Boom angle (°) | Offset 5° | | Offset 25° | | Offset 45° | | Offset 60° | |
| | Working radius (m) | Load (ton) | Working radius (m) | Load (ton) | Working radius (m) | Load (ton) | Working radius (m) | Load (ton) |
| 83 | 5.8 | 2.10 | 9.8 | 1.25 | 12.8 | 0.85 | 14.0 | 0.65 |
| 77 | 11.0 | 2.10 | 14.4 | 1.25 | 16.8 | 0.85 | 17.6 | 0.65 |
| 74 | 13.4 | 2.10 | 16.6 | 1.23 | 18.7 | 0.85 | 19.4 | 0.65 |
| 71 | 15.4 | 1.62 | 18.7 | 1.15 | 20.5 | 0.85 | 21.0 | 0.64 |
| 69 | 16.6 | 1.32 | 19.9 | 0.98 | 21.7 | 0.85 | 22.1 | 0.64 |
| 66 | 18.5 | 0.93 | 21.5 | 0.71 | 23.5 | 0.61 | 23.6 | 0.61 |
| 64 | 19.7 | 0.72 | 22.6 | 0.54 | 24.5 | 0.45 | 24.6 | 0.45 |
| Critical boom angle | 63° | | 63° | | 63° | | 63° | |
| Standard hook | for 4 ton | | | | | | | |
| Hook mass | 60kg | | | | | | | |
| Parts of line | 1 | | | | | | | |

■ When the outriggers are not used

Based on ISO 4305
Not exceed 75% of static tipping loads

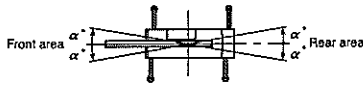
|  | | | | | | |  | | | | | | |
|---|----------------------|-----------------|------------|-----------------|-------------|-----------------|---|-----------------|------------|-----------------|-------------|-----------------|---------------------|
| Working radius (m) | Stationary on rubber | | | | | | Pick & carry (less than 2 km/h) | | | | | | Working radius (m) |
| | 9.35m Boom | | 16.4m Boom | | 23.45m Boom | | 9.35m Boom | | 16.4m Boom | | 23.45m Boom | | |
| | Over front | 360° full range | Over front | 360° full range | Over front | 360° full range | Over front | 360° full range | Over front | 360° full range | Over front | 360° full range | |
| 3.0 | 13.50 | 8.10 | 9.00 | 7.30 | | | 10.00 | 6.10 | 6.60 | 5.10 | | | 3.0 |
| 3.5 | 12.00 | 6.80 | 9.00 | 6.70 | 6.50 | 4.50 | 8.95 | 5.10 | 6.60 | 4.90 | 5.50 | 3.20 | 3.5 |
| 4.0 | 10.75 | 5.80 | 9.00 | 5.65 | 6.50 | 4.50 | 8.00 | 4.30 | 6.60 | 4.10 | 5.50 | 3.20 | 4.0 |
| 4.5 | 9.65 | 4.90 | 9.00 | 4.60 | 6.50 | 4.50 | 7.10 | 3.65 | 6.60 | 3.45 | 5.50 | 3.20 | 4.5 |
| 5.0 | 8.70 | 4.00 | 8.20 | 3.75 | 6.50 | 4.30 | 6.40 | 3.10 | 6.00 | 2.75 | 5.50 | 3.20 | 5.0 |
| 5.5 | 7.80 | 3.35 | 7.40 | 3.10 | 6.05 | 3.65 | 5.75 | 2.55 | 5.40 | 2.25 | 5.15 | 2.75 | 5.5 |
| 6.0 | 7.00 | 2.80 | 6.60 | 2.55 | 5.65 | 3.10 | 5.20 | 2.15 | 5.00 | 1.80 | 4.80 | 2.35 | 6.0 |
| 6.5 | 6.25 | 2.30 | 5.90 | 2.10 | 5.25 | 2.65 | 4.70 | 1.80 | 4.45 | 1.50 | 4.45 | 2.00 | 6.5 |
| 7.0 | | | 5.20 | 1.70 | 4.85 | 2.30 | | | 3.90 | 1.20 | 4.15 | 1.70 | 7.0 |
| 8.0 | | | 4.00 | 1.05 | 4.10 | 1.60 | | | 3.00 | 0.70 | 3.45 | 1.25 | 8.0 |
| 9.0 | | | 3.15 | | 3.50 | 1.05 | | | 2.40 | | 2.80 | 0.90 | 9.0 |
| 10.0 | | | 2.50 | | 3.00 | 0.65 | | | 1.80 | | 2.30 | | 10.0 |
| 11.0 | | | 2.00 | | 2.50 | | | | 1.30 | | 1.90 | | 11.0 |
| 12.0 | | | 1.60 | | 2.10 | | | | 1.00 | | 1.55 | | 12.0 |
| 13.0 | | | 1.25 | | 1.75 | | | | 0.75 | | 1.25 | | 13.0 |
| 14.0 | | | | | 1.45 | | | | | | 1.00 | | 14.0 |
| 15.0 | | | | | 1.20 | | | | | | 0.75 | | 15.0 |
| 16.0 | | | | | 0.95 | | | | | | 0.55 | | 16.0 |
| 17.0 | | | | | 0.75 | | | | | | | | 17.0 |
| 18.0 | | | | | 0.55 | | | | | | | | 18.0 |
| Critical boom angle | — | — | — | 50° | 29° | 59° | — | — | — | 49° | 38° | 61° | Critical boom angle |
| Standard hook | for 25 ton | | | | | | for 25 ton | | | | | | Standard hook |
| Hook mass | 220kg | | | | | | 220kg | | | | | | Hook mass |
| Parts of line | 4 | | | | | | 4 | | | | | | Parts of line |

(Unit : Metric ton)

■ Notes for the lifting capacity chart

■ When the outriggers are used

- The lifting capacity chart indicates the maximum load which can be lifted by this crane provided it is level and standing on firm level ground. The values in the chart include the mass of the main hook and slings for boom operation, and auxiliary hook and slings for jib operation.
[25 ton hook (mass: 220kg), 4 ton hook (mass: 60kg)]
Within the chart the figures in the area bordered with a thick line are based on structural limitations while other figures are determined by stability limitations.
- The working radii are the actual values allowing for boom and jib deflection. Therefore you must always operate the crane on the basis of working radius.
- The jib working radius is based on the jib mounted on the end of the 30.5m boom. When operating at other boom lengths, use the boom angle alone as the criterion.
- Do not operate the jib when the outriggers are completely retracted.
- The lifting capacities for the over sides vary with the outriggers extension width. Therefore for each outriggers extension condition you should work according to the lifting capacity chart. Use the lifting capacity chart of outriggers full extended for both front and rear areas lifting capacities.

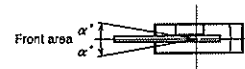


| Outrigger extension status | Intermediate extension (6.0m) | Intermediate extension (5.0m) | Intermediate extension (3.8m) | Full retraction |
|----------------------------|-------------------------------|-------------------------------|-------------------------------|-----------------|
| Area α° | 35 | 30 | 20 | 3 |

- The lifting capacity of the rooster sheave is the lifting capacity of the boom minus the mass of all attached hook, slings etc. to the boom, with an upper limit of 4,000kg.
[The hook for use with the rooster sheave is the 4 ton hook (mass: 60kg) with one part of line.]
- If the boom length, boom angle, working radius and/or jib angle exceeds the rated value, use the lifting capacity for the rated value or for the next one, whichever gives the smaller lifting capacity.
- If you are working with the boom while the jib is rigged, subtract 2,400kg plus the mass of all attached hook, slings etc. to the boom from the each lifting capacity of the boom, with an upper limit of 14 ton.
Do not use the rooster sheave in this situation. And do not operate the boom while the jib is rigged, when the outriggers are completely retracted.
- In whatever working conditions the corresponding boom critical angle is shown in the chart. The crane can tip over if the boom is lowered below the critical angle even if unloaded.
Therefore, never lower the boom below these angles.
- The standard parts of line for each boom length are as indicated in the chart. If you work with a non-standard number of parts of line, do not exceed 37.2kN (3.8tf) per wire rope respectively.
- If you are work with 7 parts of line on the hook, use the rooster sheave.
- High-speed lowering operation should only be performed to allow descent of the hook alone. Avoid sudden lever operation.
- Outriggers full retraction condition is applied only to the crane with H-type outriggers.
- Crane operation is permissible up to a wind speed of 10m/s. Even in relatively light wind conditions, extra care should be taken when handling loads presenting large wind catching areas.
- Kato bears no liability whatsoever for crane tipping or damage caused by crane operations with a load in excess of the lifting capacity or incorrect procedure.

■ When the outriggers are not used

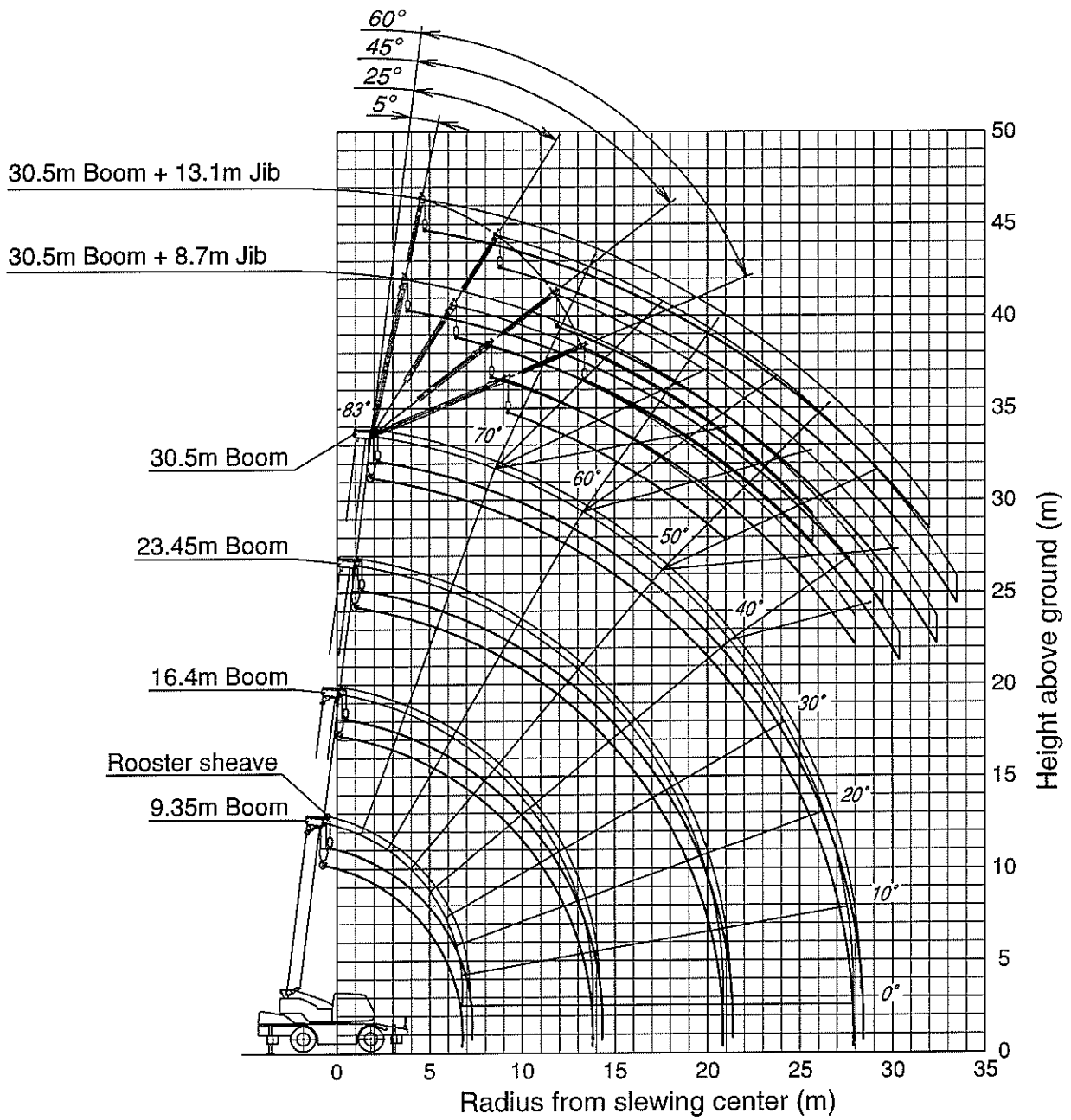
- The lifting capacity chart indicate the maximum load the crane can lift when its body is level on firm level ground with all tires inflated to the rated pressure and suspension cylinder completely retracted. The values in the chart include the mass of the main hook and slings.
Within the chart the figures in the area bordered with a thick line are based on structural limitations while other figures are determined by stability limitations.
[Rated tire pressure: 900kPa (9.0kgf/cm²)]
- The working radii are the actual values allowing for boom deflection. Therefore you must always operate the crane on the basis of the working radius.
- The lifting capacity differs between the front area capacity and the full range capacity. When slewing from the front to the side, take care that the crane could not be over loaded.



| Crane operation | Stationary crane-on-rubber operation | Pick and carry operation |
|-----------------|--------------------------------------|--------------------------|
| Area α° | 1 | 1 |

- Do not work with the jib or with a boom length of more than 23.45m.
- For stationary crane-on-rubber operation, the parking brake and service brake lock device must be engaged.
- For pick and carry operation, the high/low speed switch must be switched to "ON" (low range) and the shift lever set to speed 1.
- For pick and carry operation, lower the load to just above the ground and keep your speed strictly below 2km/h to avoid swinging the load.
Take particular care to avoid sharp turns, sudden starts and stops.
- Never operate the crane during pick and carry operation. The slewing brake must be applied.
- The lifting capacity of the rooster sheave is the lifting capacity of the boom minus the mass of all attached hook, slings etc. to the boom, with an upper limit of 4,000kg.
[The hook for use with the rooster sheave is the 4 ton hook (mass: 60kg) with one part of line.]
- If the boom length, boom angle, working radius and/or jib angle exceeds the rated value, use the lifting capacity for the rated value or for the next one, whichever gives the smaller lifting capacity.
- In whatever working conditions the corresponding boom critical angle is shown in the chart. The crane can tip over if the boom is lowered below the critical angle even if unloaded.
Therefore, never lower the boom below these angles.
- The standard parts of line for each boom length are as indicated in the chart. If you work with a non-standard number of parts of line, do not exceed 37.2kN (3.8tf) per wire rope respectively.
- High-speed lowering operation should only be performed to allow descent of the hook alone. Avoid sudden lever operation.
- Crane operation is permissible up to a wind speed of 10m/s. Even in relatively light wind conditions, extra care should be taken when handling loads presenting large wind catching areas.
- Kato bears no liability whatsoever for crane tipping or damage caused by crane operations with a load in excess of the lifting capacity or incorrect procedure.

WORKING RANGE

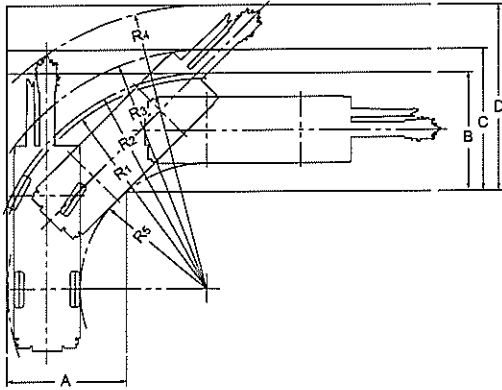


Note:

1. This diagram does not include deflection of Boom and Fly jib.
2. The outriggers are fully extended.

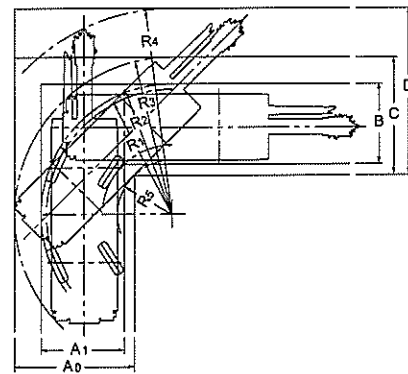
Minimum path width

● Right turn in two-wheel steering mode



- $R_1=8.20\text{m}$
(Minimum turning radius)
- $R_2=8.40\text{m}$
(Turning radius of extremely outer tyre)
- $R_3=9.35\text{m}$
(Chassis turning radius)
- $R_4=11.07\text{m}$
(Boom end turning radius)
- $R_5=4.92\text{m}$
(Turning radius extremely chassis inner)
- $A=4.63\text{m}$ (Width of entrance)
- $B=4.63\text{m}$ (Width of wheel exit)
- $C=5.57\text{m}$ (Width of chassis exit)
- $D=7.28\text{m}$ (Width of exit at end of boom)

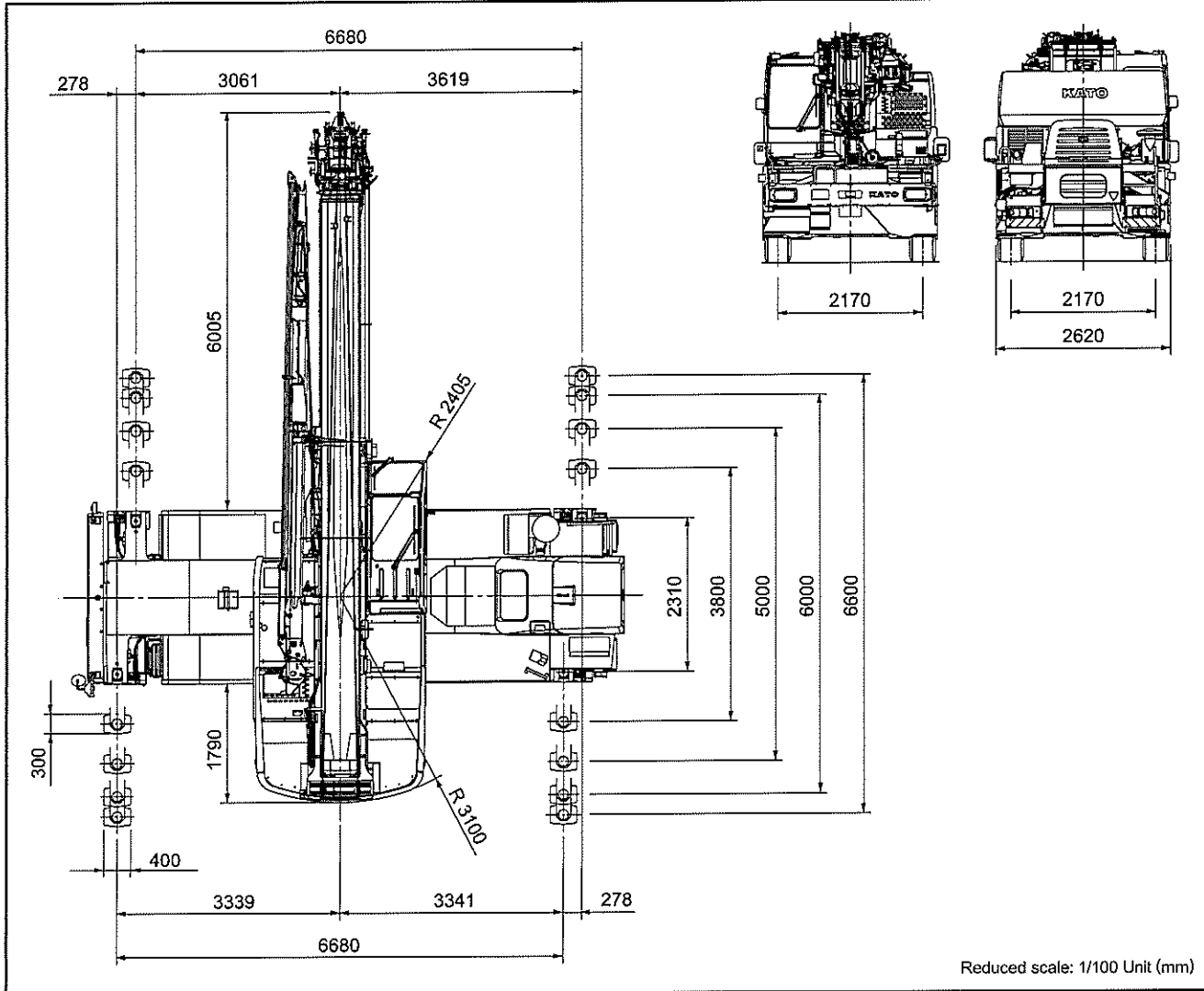
● Right turn in 4-wheel steering mode



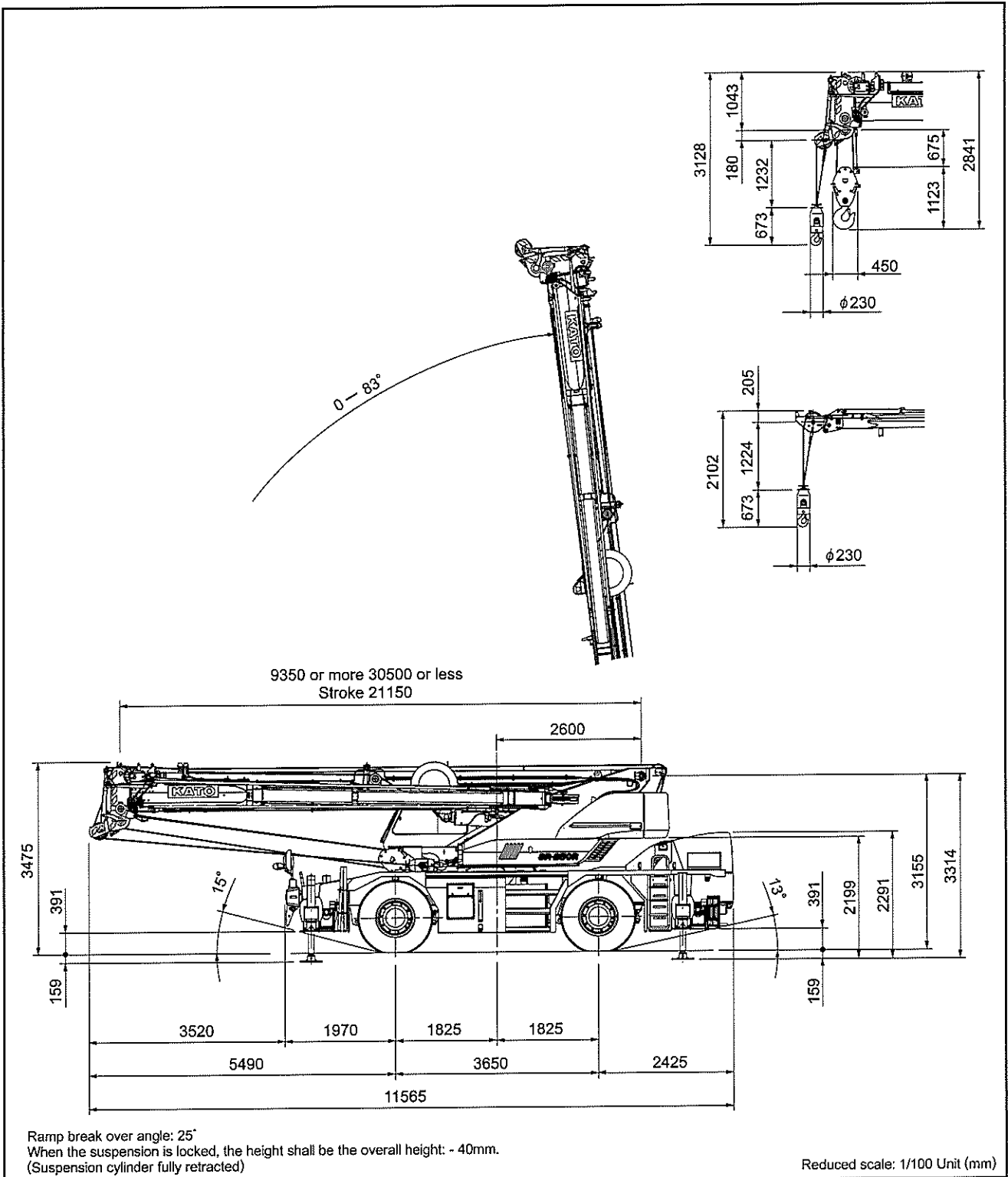
- $R_1=4.90\text{m}$
(Minimum turning radius)
- $R_2=5.10\text{m}$
(Turning radius of extremely outer tyre)
- $R_3=6.17\text{m}$
(Chassis turning radius)
- $R_4=8.09\text{m}$
(Boom end turning radius)
- $R_5=2.10\text{m}$
(Turning radius extremely chassis inner)
- $A_0=4.66\text{m}$ (Width of chassis entrance)
- $A_1=3.25\text{m}$ (Width of wheel entrance)
- $B=3.25\text{m}$ (Width of wheel exit)
- $C=4.66\text{m}$ (Width of chassis exit)
- $D=6.58\text{m}$ (Width of exit at end of boom)

Note: The above values are based on calculations.

Overall view



Overall view



* KATO products and specifications are subject to improvements and changes without notice.

Address inquiries to:

KATO
KATO WORKS CO.,LTD.

9-37, Higashi-ohi 1-chome, Shinagawa-ku, Tokyo, 140-0011, Japan
 Tel. : Head Office Tokyo (03) 3458-1111
 Overseas Marketing Department. Tokyo (03) 3458-1115
 Fax. : Tokyo (03) 3458-1152
 URL <http://www.kato-works.co.jp>

C03351
12.2012-1000 (TI) 1



We acquired the "ISO 9001" certification which is an international standard for quality assurance.